

CODE ENFORCEMENT

Homeowners' Guide to **SARASOTA COUNTY CODES**



Sarasota County Code Enforcement created this booklet for homeowners and renters to understand their responsibilities to achieve compliance with County codes.

Following these codes helps maintain high property standards that benefit everyone.

Deed restrictions in your subdivision may be more stringent. Sarasota County does not enforce deed restrictions. Check to be sure you are in compliance.

Code enforcement officers inspect private properties for violations.

Most people, once informed of the rules and reasons for them, work with the County toward compliance.

When voluntary compliance fails, formal enforcement measures must be taken. Code enforcement officers are authorized to issue citations. If violations continue, officers may present violations to a Special Magistrate who may impose fines up to \$500 per day and a lien may be placed against your property.

You can reach Code Enforcement at:
North County **941-861-6403**
South County **941-861-3280**

Code Enforcement
1301 Cattlemen Road, Bldg A, Sarasota, FL 34232

Robert L. Anderson Administration Center
4000 S. Tamiami Trail, Venice, FL 34293

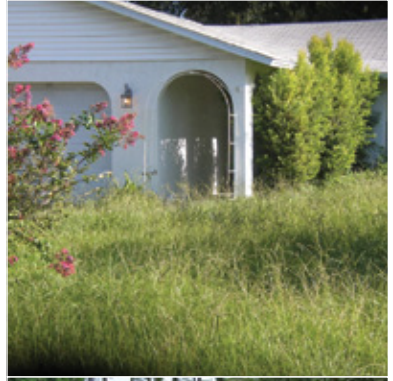
Community Standards

Sarasota County is currently integrating several different county code enforcement departments to better service the community. The goal of Community Standards is to preserve and enhance the character of our communities, environment and quality of life.

COMMON VIOLATIONS

GRASS AND WEEDS

Grass and weeds may not exceed 12 inches in height.



JUNK, TRASH AND DEBRIS

Junk, trash, and debris are prohibited from being left in the yard and must be disposed of properly. This includes, but is not limited to wood, tires, automobile parts, hazardous waste, abandoned property, unusable or discarded household items, inoperative or discarded machinery or equipment, motor vehicles and trailers, which are inoperative or lack current license tags, solid waste, construction or demolition materials.



UNLICENSED, INOPERATIVE VEHICLES

All vehicles must be operable and have current license tags or must be stored in a completely enclosed building.



INOPERATIVE, JUNK BOATS

All boats must be operable and seaworthy and belong to the owner or tenant residing at the property at which it is stored.





OVERWEIGHT VEHICLES

The parking, servicing, repair and storage of trucks, buses, vans and tractor trailers in excess of 6,000 pounds vehicle empty weight is prohibited in residential or open use districts.



LIVING IN MOTOR HOMES OR RVS IN RESIDENTIAL AREAS

You are allowed to have one recreational vehicle stored outside of a completely enclosed building, however, it shall not be used for living, sleeping, housekeeping or business purposes and shall not be hooked to any utilities.



SIGNS IN RIGHTS OF WAY

Signs erected on the rights of way of any public street, road or way are prohibited.



HOME BUSINESSES

Home businesses may not include customers or employees going to or from your residence. Businesses that generate traffic are not appropriate for residential neighborhoods. Business materials and supplies may not be stored on the premises.

BUILDING PERMITS

Before the start of any construction or structural repair, check with the permitting office to ensure if a permit is required.



DEMOLITIONS

Unfit/unsafe structures are any structures in decay or ruin due to fire damage, structural deterioration, or neglect that meet the criteria for demolition defined by the building code (i.e. collapsed roof, walls or floors) and pose a life safety threat to the public.



NEWSRACKS

Newsracks placed on public rights of way that are unsecured, unsightly and improperly maintained, or abandoned are prohibited.



HOUSEHOLD GARBAGE AND YARD WASTE

All waste must be in trash cans, plastic bags or tied bundles, weighing no more than 40 pounds. Put containers out no sooner than 5 p.m. on the day before pickup and remove them by 10 a.m. the day after. All containers are to be stored in side or rear yards only. Separate yard waste from solid waste.





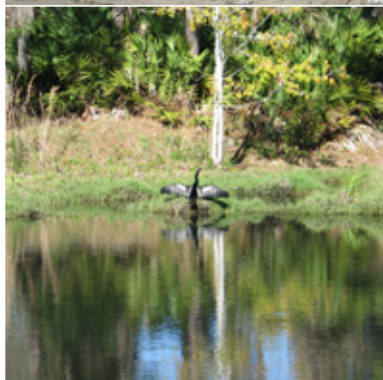
HOUSEHOLD HAZARDOUS WASTE

Household hazardous waste is not collected at the curb (except for motor oil, oil filters and electronics). You must bring these types of items to a collection center, neighborhood collection or community collection program for proper disposal.



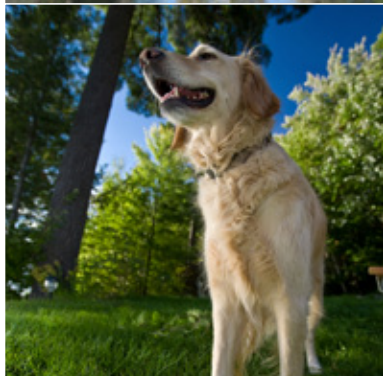
APPLIANCES

Residents may call Waste Management at 493-4100 to schedule a pick-up for an appliance or an electronic item. Refrigerator and freezer doors must be removed before placing at curb. Request for pick-ups must be made 48 hours prior to your regular collection day. This service is included at no additional cost (item limits may apply).



WETLANDS AND PRESERVATION AREAS

All activities involving filling, excavation, disturbance of native vegetation or storage of materials are prohibited within wetlands and sites designated as preservation or conservation areas within a subdivision or neighborhood.



BARKING DOGS

Keep your dogs and cats on your property and on a leash unless fenced. The code prohibits allowing a pet to make objectionable noises (barking dogs) for any length of time.

SPANISH TRANSLATIONS OF COMMON VIOLATIONS

YERBAS Y PASTO ALTO (GRASS AND WEEDS)

Siempre mantenga sus césped cortado a una altura no mayor de 12 pulgadas.

ALMACENAMIENTO EXTERIOR ILEGAL

(IMPROPER OUTDOOR STORAGE)

Mantenga el exterior de su propiedad libre de basura y escombros. Almacene objetos y equipo sin usar, en una estructura totalmente cerrada.

VEHICULOS DESCOMPUESTOS SIN LICENCIA

(UNLICENSED INOPERATIVE VEHICLES)

Todo vehículo debe tener placas vigentes y debe ser operable, si no; el vehículo deberá estar estacionado en una estructura totalmente cerrada (garage).

PERMISOS DE CONSTRUCCION

(CONSTRUCTION PERMITS)

Antes de comenzar cualquier construcción o reparación en su propiedad, verifique con la oficina de permisos, para determinar si la obra necesita un permiso.

NEIGHBORHOOD SERVICES

Neighborhood Services works with citizens, neighborhoods and community groups through the following opportunities: Neighborhood Strengthening, Neighborhood Planning, Neighborhood Grants and Neighborhood Outreach. For information about any of these opportunities call **941-861-5000**, email **neighbor@scgov.net** or visit us on the web at **www.scgov.net** and use keyword *neighborhood*. Sarasota County uses the Neighborhood Directory for many important notifications such as new development proposals, updates about Emergency Operations and special events. Please visit our Web site and join our mailing list or update your official neighborhood representative's contact information.

WHO TO CALL

Animal Services	941-861-9500
Building Permits	
North County	941-861-6678
South County	941-861-3029
Code Enforcement	
North County	941-861-6403
South County	941-861-3280
FPL (street light out)	1-800-226-3545
Fire Hazards	941-861-2290
Garbage and Recycling	941-861-6731
Waste Management	941-493-4100

CALL CENTER (All Violations) 941-861-5000

Hazardous Waste	Pollution Hotline
Water Restrictions	Drainage
Sidewalks	Potholes
Traffic Signs	Sinkholes
Collapsed or Damaged Pipe	Rights-of-way
Private Stormwater Violations	

NON-EMERGENCY SHERIFF'S OFFICE

North County	941-861-5800
South County	941-861-1701

FOR ANY LIFE THREAT OR ACCIDENT - 911